

T'aaq-wiihak Fisheries

ƙ'waaqm̓is Spawn on Kelp Dashboard



Fishery Description

The five Nations seek to implement a community-based spawn-on-kelp (SOK) fishery within their territories. This fishery will focus on harvesting herring roe-on-kelp through the penning or pathing of herring to large areas of structured husmin (kelp) to encourage the herring to spawn on the kelp, which would then be harvested and sold to markets, particularly Japanese markets.

The fishery is noted to be low impact as compared to directed herring harvest for food, roe, and bait.

Herring ponding and trapping is a method used historically by the Nations via weirs and basket trapping. Traditionally, the key is utilizing tools and an existing environment to trap herring for the purposes of harvesting a portion of the spawn on kelp. In this instance, the Nations are looking at open ponding/open fishery.

In a modern context, the ƙ'waaqm̓is spawn-on-kelp fishery utilizes similar methods; however, the introduction of mechanization and structures allows harvesters to pond herring by the method of capture and relocation. In this model, herring are grouped into floating ponds with stringed kelp with the intent to harvest spawn.

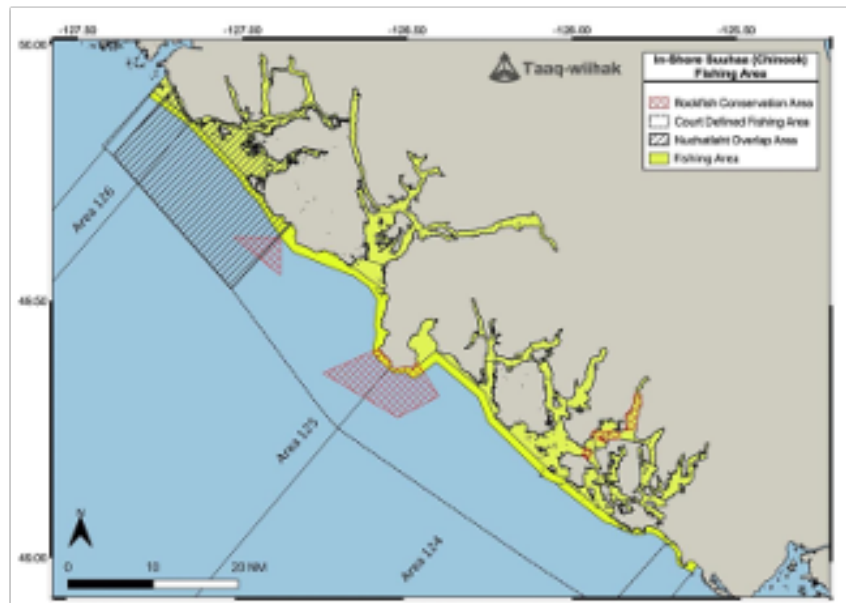
T'aaq-wiihak Fisheries K'waqmis Spawn on Kelp Dashboard

<p>Target Species</p>	<p>λusmit (Pacific Herring) <i>Clupea pallasii</i> k'waqmis (<i>Spawn on Kelp</i>)</p>
<p>Stock Assessment</p>	<p>Five Nations' perspective: Herring is a long way from what was experienced in the 1960's. Pre-1985, herring populations were consistent. However, there has since been a collapse of the stock. We are continuing to look for indicators.</p> <p>Spawn thickness on trees is still not at what has been stated historically—less than 18 egg layers.</p> <p>Canada's perspective: There is not enough data on Pacific herring to understand the stock status fully. Trends show increases in population in the WCVI that are three times greater than the 10-year average (from 2014 onward) of 18,000 tonnes (excluding 2023 and 2024). The estimated return for 2025 is 60,000t, with variation ranging from 25,000t to 90,000t.</p>
<p>Allocation & Participation</p>	<p>Up to 48,000 pounds of harvested weight.</p> <p>This will be a community-based fishery. Participation will not be capped so as to support access.</p> <p>Each participant will receive up to 5,000 pounds of landed weight for sale.</p>
<p>Timing</p>	<p>February 28th to April 30th, 2025 (actual fishing time will be declared via hail process).</p>

T'aaq-wiihak Fisheries K'waqmis Spawn on Kelp Dashboard

Fishing Area

Harvest selection will occur within the five Nations' territories. Likely inshore, focused primarily in Areas 24 and 25 on the coastline. The fishing area that falls within the Nuchatlaht overlap lines will be closed out of respect for the Nation's authority in that area. Kelp is prioritized to be harvested in the territory.



Harvest Method

Using kelp strings to capture the eggs in open ponding. Using targeted husmin (Kelp) that are the most common in the area.

Target Kelp Species:

Typically, large-bladed species such as *macrocystis* (giant kelp) are desirable.

T'aaq-wiihak Fisheries K'waqmis Spawn on Kelp Dashboard

Protection Measures and Agreement	<ol style="list-style-type: none">1) First spawn protection provision HFN (January)2) Kelp spacing in line with standard industry practices3) Spread out of harvest areas4) Some area restrictions5) Harvest time provision
Hailing Process	<p>Hailing will happen using the same process as in the fin-fishery. However, additional information is required for spawn-on-kelp hails. This information is as follows:</p> <ol style="list-style-type: none">1) Fisher name and T'aaq-wiihak designation number2) Vessel name and T'aaq-wiihak decal number3) Intended landed location4) Intended buyer5) Intended landing date <p>Methods of Hail:</p> <ol style="list-style-type: none">1) www.taaqwiihak.ca (herring page)2) Via Ha'oom Fisheries Coordinators (9:00 am-7:00 pm): 1-250-204-1522 for Kadin Snook 1-250-204-9948 for Olivia Currie

T'aaq-wiihak Fisheries K'waqmis Spawn on Kelp Dashboard

Monitoring

Monitoring provider: J.O. Thomas

J.O. Thomas will be at the dock to validate the harvests.

J.O. Thomas will mark each fisher's harvest with an ID tag for the secondary weight assessment at the buyer's plant.

It is required that your buyer and processing location are identified prior to verification.

Method:

Kelp with roe will be weighed and measured at the plant using methods by J.O. Thomas. For more information on this process, please contact the fisheries coordinators.

Contact information is listed above.