



T'AAQ-WIIHAK FISHERIES NOTICE
Esperanza Fishery – July 01, 2021

The leadership of the Five Nations is authorizing a fishery to open on the terms set out in this notice. It is important for fishers to be aware that DFO is imposing some licence conditions on this fishery opening that the leadership of the five Nations are not including as a requirement for the aboriginal-rights based fishery.

The areas highlighted in blue in this notice indicate those licence conditions by DFO. Fishers should be aware of these conditions. Fishers who choose not to follow licence conditions imposed by DFO may face potential ramifications, including charges and prosecution from DFO, including for violations of the *Fisheries Act* and regulations.

OPENING TIME: **Start:** Thursday July 01 at 00:01, **End:** Rolling over until the Allocation is achieved.

FISHING AREA: A portion of 25-13 and a portion of 25-9 near Esperanza. Please note that the Nuuchatlaht Overlap Area (hatched), is closed. The fishing area map is on page 4 and the boundary coordinates are on page 5.

DESIGNATION: Must be a designated T'aaq-wiihak fisher and have a valid 2021 T'aaq-wiihak Fisheries Card and be fishing on a registered T'aaq-wiihak vessel with a valid 2021 T'aaq-wiihak decal. Participants must fly a red T'aaq-wiihak flag while on a T'aaq-wiihak fishing trip and **must HAIL OUT for each trip.**

GEAR: Troll; barbless hooks and Gillnet; 50 fathom, 60 meshes deep.

SPECIES ALLOWED FOR SALE (size limits & trip limits):

Species	Size Limits and Restrictions	T'aaq-wiihak Trip Limits
Suuhaa (chinook)	45 cm fork length	170 pcs/trip
Cuwit (coho)	Hatchery marked or unmarked	No limit
Hinkuugas (chum)	No limit	No limit
Čaapi (pink)	Non-retention	Non-retention
Mi'aat (Sockeye)	Non-retention	Non-retention
ᐅᐅᐅᐅᐅᐅ (halibut)	81.3 cm (head-on), 61 cm (head-off)	250lbs
Túskuuᕈ (lingcod)	65 cm (head-on), 50 cm (head-off)	No limit.
Rockfish	Yellow-eye may not be sold No limit	All rockfish must be retained and landed at the dock. Fishers should take measures and choose areas to avoid at risk species (yelloweye, canary) when possible.

Fishers are required to retain 100% of the fish they catch (including all rockfish), with the exception that fishers can release undersized salmon, halibut, lingcod and all dogfish. Fish that cannot be sold may be taken for home use.

HAIL OUT PROCEDURES: Fishers are required to **HAIL OUT for each trip**. Hail outs can be made up to 12 hours before leaving the dock. Landings will not be authorized if you do not hail out. HAIL OUTS can be made 24 hours/day to:

Phone (call/text/voicemail): 250-266-0418

LANDING / HAIL IN PROCEDURES: A Designated Ecotrust Monitor must be present at all landings. Ecotrust Monitor will validate your catch, collect fishing logs and provide you with a T’aaq-wiihak Landing Slip. Landings can occur only at the designated landing sites outlined below:

Zeballos	Mid Island Ice	Until further notice, fishers must offload their own catch and ice is not available. Hail-In Required
----------	----------------	--

Fishers MUST HAIL IN to confirm a landing time 24hrs in ADVANCE to arrange for a monitor to be at the landing, please understand that we need time to arrange this. You can HAIL IN to 250-266-0418. The HAIL phone is monitored from 7am – 7pm.

FISHING LOGS: Fishers must fill out a Fishing Log on a daily basis (one page per fishing day) recording all kept AND released fish. This fishing log must be submitted to the monitor at the time of landing

PACKING FISH: Packing, or landing catch for another vessel, is only authorized in cases where the combined catch on board the vessel does not exceed the trip limit. If the catch does exceed the trip limit, written authorization from your fisheries manager will be required. The packer must produce a signed fishing log (completed by the fisher) for the catch.

MONITORING

- 100% of landings and catch must be monitored by an Ecotrust Monitor prior to sale. A T’aaq-wiihak Landing Slip is required before any fish can be sold.
- All halibut being sold will be tagged with a white **HA’OOM Tag** prior to sale to support traceability and accountability of T’aaq-wiihak fish and to mark it as unique in the marketplace.
- Home use may be offloaded prior to landing at the designated landing site if your fisheries manager verifies the catch and provides you with an offload record to be provided to the Ecotrust monitor at the time of landing.
- Your Nations Guardians and DFO will be doing on water patrols.
- **NOTE-** DFO is requiring that all trollers use a [Vessel Monitoring System when participating in this fishery](#). According to DFO’s requirement, trollers must have VMS installed and operating, using a service provider. The Nations leadership is not requiring trollers to use VMS for this fishery.

COVID-19 LANDING PROCEDURES

WE ARE WORKING WITH ECOTRUST TO ENSURE EVERYONES SAFETY DURING THESE CHALLENGING TIMES. ECOTRUST CANADA HAS DEVELOPED POLICIES AND PROCEDURES TO COMPLY WITH THE GOVERNMENT’S COVID PROCEEDURES. PLEASE BE PATIENT AND LISTEN TO THE DIRECTION OF YOUR MONITORS DURING THIS TIME AND MAINTAIN AT LEAST 2M OF PHYSICAL DISTANCE AT ALL TIMES. WHILE THESE MEASURES ARE IN PLACE IT IS THE SHARED RESPONSIBILITY OF ALL DURING LANDING ACTIVITIES TO ENSURE THESE MEASURES ARE FOLLOWED. NO LANDINGS WITHOUT PRIOR AUTHORIZATION WILL BE ALLOWED.

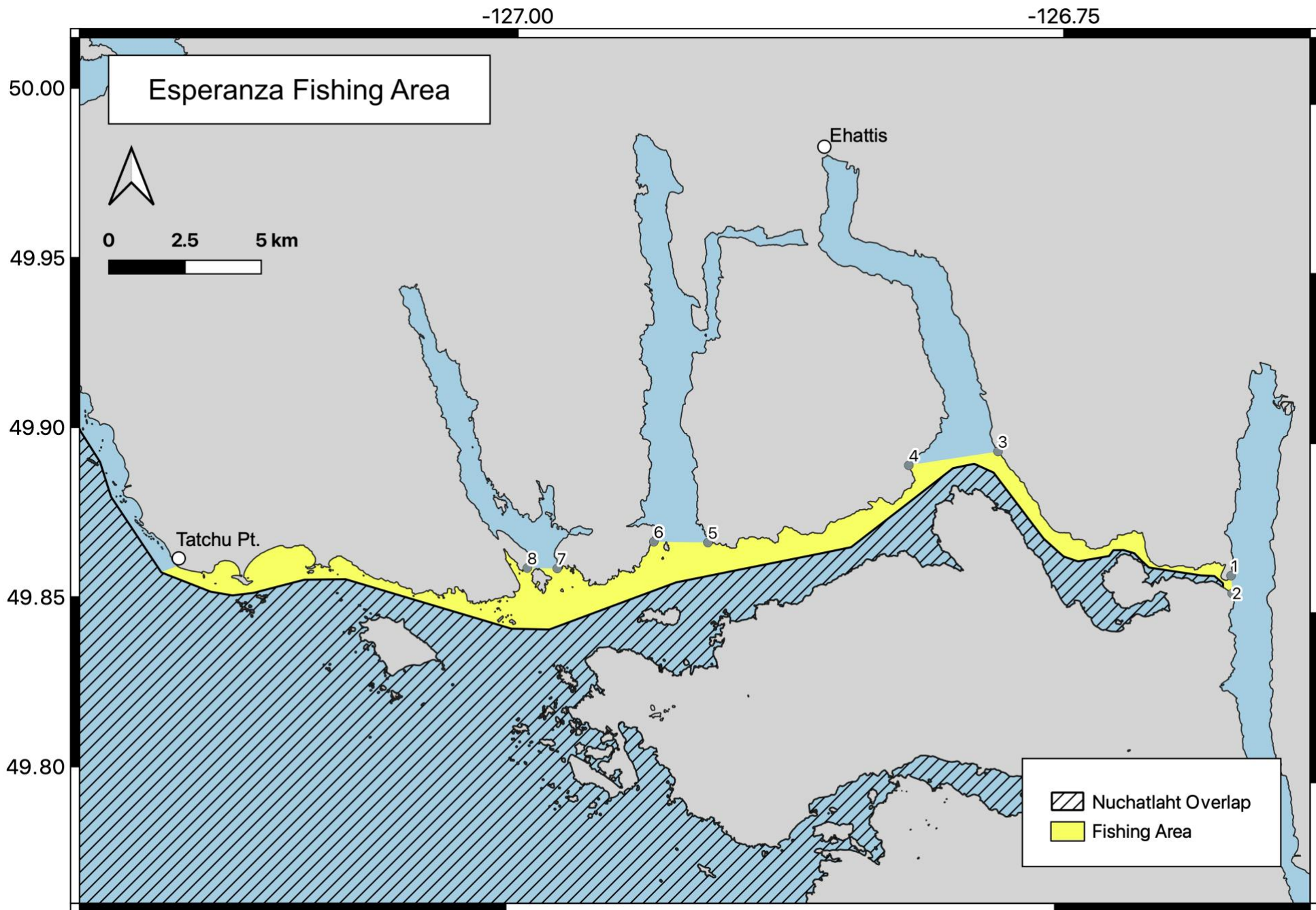
FISHER REQUIREMENTS

- Fishers are required to secure their own fish ice (salted), and ensure fish are delivered dressed and properly chilled. Failure to do so may affect price received and/or ability to sell catch.
- Fishers are required to adhere to the conditions and restrictions defined in the T'aaq-wiihak Requirements & Responsibilities Agreement with their Ha'wiih
- Fishers are required to ensure their vessels comply with Transport Canada, CFIA and WorksafeBC regulations.

BUYERS:

It is the business of each fisher who they sell to and at what price. This is not controlled by Ha'oom Fisheries Society or your Nation.

For More information please visit taaqa.ca or contact:		
Your Fisheries Manager/Coordinator		
AFN (Luke Swan)	250-670-9535 (office)	250-266-2509 (cell)
ECFN (Dave Miller)	250-761-4155 (office)	
HFN (currently vacant)	250-670-1100 (office)	
MMFN (Nathan George)	250-283-2015 (office)	
TFN (Andrew Jackson)	250-725-3350 (office)	
T'aaq-wiihak Fisheries Staff		
Kadin Snook (Fisheries Coordinator)		250-204-1522
DFO Salmon Resource Manager		
Eamon Miyagi (Salmon Resource Manager)		250-286-5896
Gwyn Mason (Hook & Line Coordinator)		604-666-3244



ID	Latitude	Longitude
1	49°51.614'N	126° 39.854'W
2	49° 51.337'N	126° 40.179'W
3	49° 53.807'N	126° 46.622'W
4	49° 53.475'N	126° 49.135'W
5	49° 52.119'N	126° 54.498'W
6	49° 52.135'N	126° 56.044'W
7	49° 51.711'N	126° 58.728'W
8	49° 51.562'N	126° 59.432'W

The Fishing Area Boundaries are:

- A portion of subarea 25-13 north of a line commencing at 49°51.458' N and 127°09.546' W (near Tatchu Point), then easterly to a point 49°51.131' N and 127°08.198' W (within Subarea 25-13), then easterly to a point 49°51.073' N and 127°07.599' W (High Rocks), then easterly to a point at 49°51.122' N and 127°07.027' W, then easterly to a point at 49°51.37' N and 127°05.634' W, then easterly to a point at 49°51.390' N and 127°04.510' W, then easterly to a point at 49°50.559' N and 126°59.95' W (Double Island), then easterly to a point at 49°50.553' N and 126°58.915' W, then easterly to a point at 49°51.417' N and 126°55.452' W, then easterly to a point at 49° 52.077' N and 126° 50.679' W, then northeasterly to a point at 49°53.234' N and 126°48.418' W, meeting the 25-9 boundary, then easterly to a point at 49°53.297' N and 126°48.950' W following the 25-9 boundary to the Vancouver island shoreline.
- A portion of 25-9 bounded by a line on the Vancouver Island shoreline at 49°53.190 N and 126°49.032 W, then south to a point at 49 51.928 N and 126 43.976 W, then easterly to a point at 49°51.97' N and 126°43.609' W, then northeasterly to a point at 49°52.072' N and 126°43.497' W, then easterly to a point at 49°52.078' N and 126°43.221' W, then easterly to a point at 49°52.026' N and 126°42.917' W, then southeasterly to a point at 49°51.775' N and 126°42.516' W, then easterly to a point at 49°51.644' N and 126°41.072' W, then easterly to a point at 49°51.637' N and 126°40.721' W, then southeasterly to 49°51.512' N and 126°40.476' W, then northerly following the 25-9 boundary line to the Vancouver Island shoreline at 49°51.557 N and 126°40.406 W.